

Corporate Headquarters

28181 River Drive
Circleville, Ohio 43113
Phone: 740.477.5000
Sales: 800.654.5696
Fax: 740.477.5001

Industrial Laser Center

48377 Fremont Blvd.
Suite 115
Fremont, CA 94538
Phone: 510.413.9788

<http://www.telesis.com>
<http://www.pinstamp.com>

Worldwide Locations

TELESIS FRANCE ■

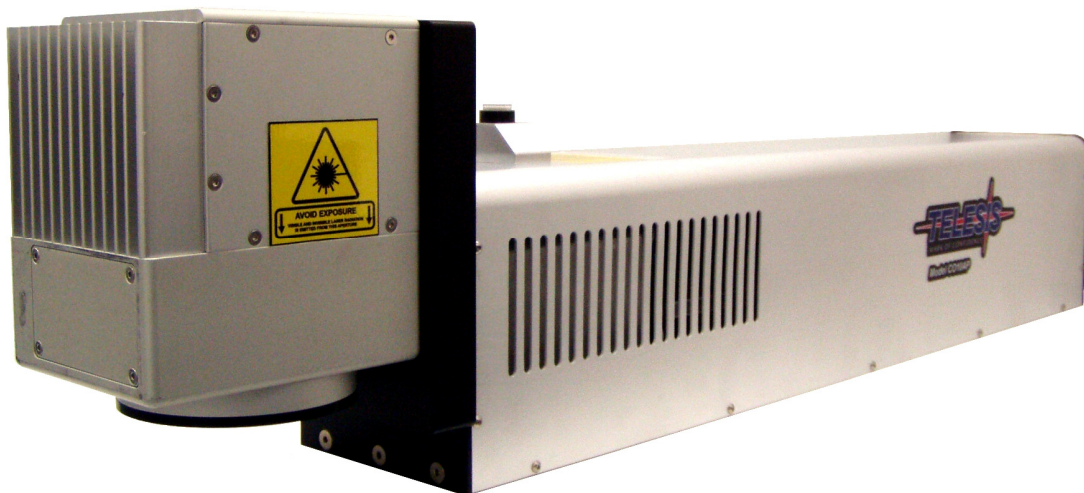
TELESIS UNITED KINGDOM ■

TELESIS NETHERLANDS ■

TELESIS GERMANY ■

TELESIS CHINA ■

CO10AP Laser Marker for Packaging Applications



CO10AP Laser Marking Head

Features:

- Marking On The Fly capability for high volume applications
- Marking speeds up to 1300 characters/second*
- Line speeds up to 15m/sec (50 ft/sec)*
- Marking fields from 50mm x 50mm (2"x2") to 250mm x 250mm (10"x10")
- Unique 4 Position Rotating Scan Head for flexible integration
- 10" Handheld touch screen and system controller with Ethernet, USB and user I/O connectivity without the need of a separate PC
- Intuitive graphical Merlin® II LS marking software available in various international languages
- Small footprint, single phase power operation allows ease of integration in a variety of applications and markets
- Quiet, efficient air cooled operation
- Sealed laser tube design with low maintenance and operating costs
- Designed to be compatible with international packaging sealing and safety standards with optional accessories



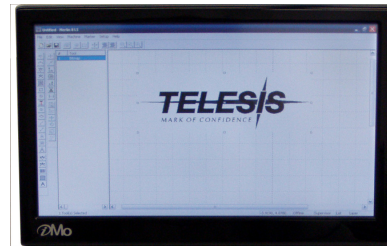
PINSTAMP® IdentiPlate®
BenchMark® TeleScribe®
Merlin® and MicroPin™
are trademarks of
Telesis Technologies, Inc.

© Copyright 2011
Telesis Technologies, Inc.
All rights reserved.

Specifications subject to
change without notice.



CO10AP System Controller



10" Touch Screen LCD Display

Options:

- Stainless steel enclosure
- Lens options: 75mm/100mm/150mm/200mm/250mm/300mm/360mm
- MOTF (Marking On The Fly) encoders and part presence sensor kit
- Enclosures and customer specific integration solutions available

Order Part Numbers:

- | | |
|-------|--|
| 71965 | Laser marking system, 7mm aperture, MOTF |
| 71967 | Laser marking system, 10mm aperture, MOTF |
| 71964 | Laser marking system, 7mm aperture, Standard |
| 71966 | Laser marking system, 10mm aperture, Standard |
| 57362 | 75mm objective lens |
| 46245 | 100mm objective lens |
| 42557 | 150mm objective lens |
| 43685 | 200mm objective lens |
| 42558 | 250mm objective lens |
| 42559 | 300mm objective lens |
| 53868 | 360mm objective lens |
| 69903 | MOTF encoder |
| 69887 | Part present sensor kit with adapters and power supply |

